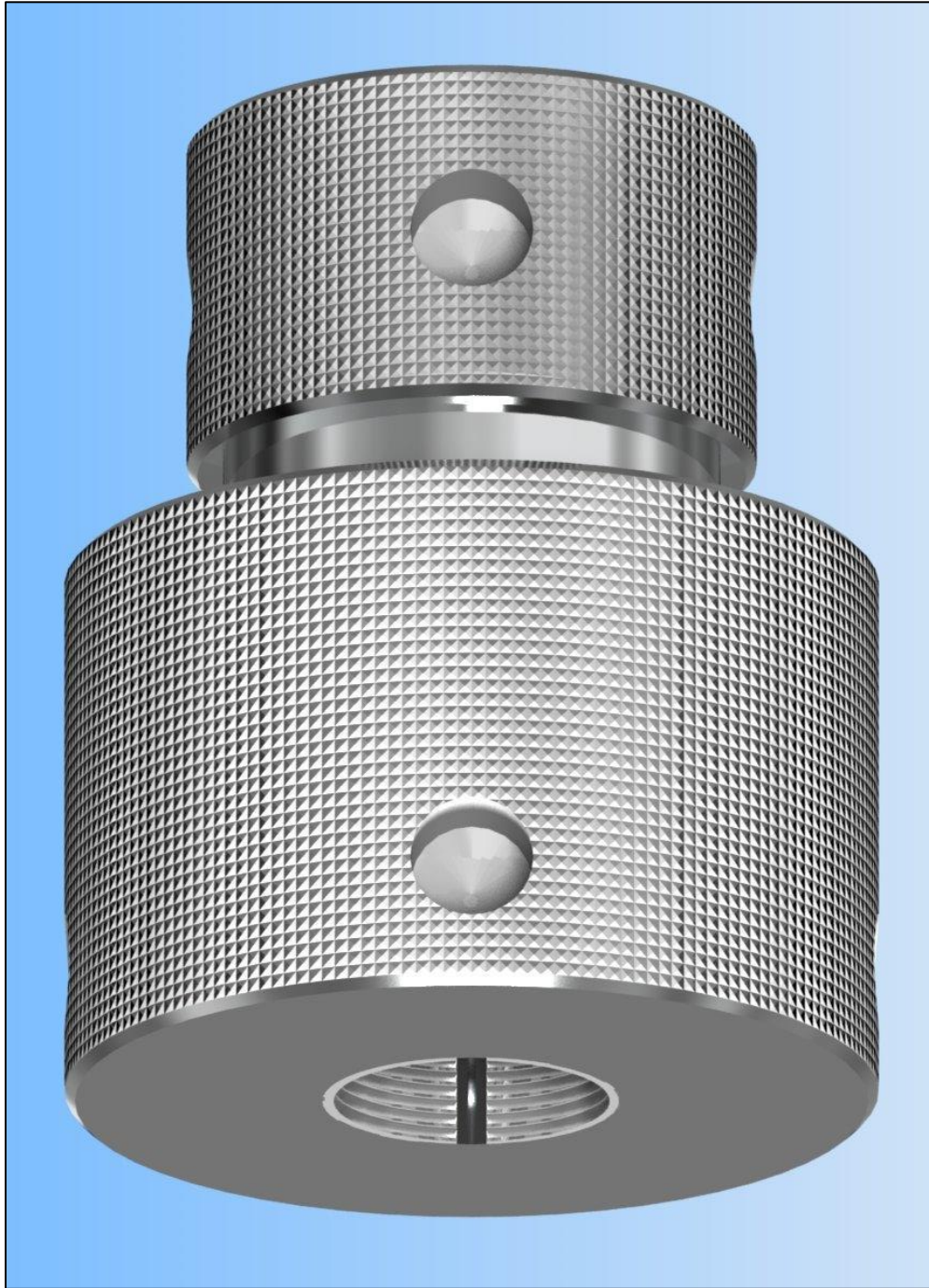


TYPE “E” EXTERNAL CLOSURE

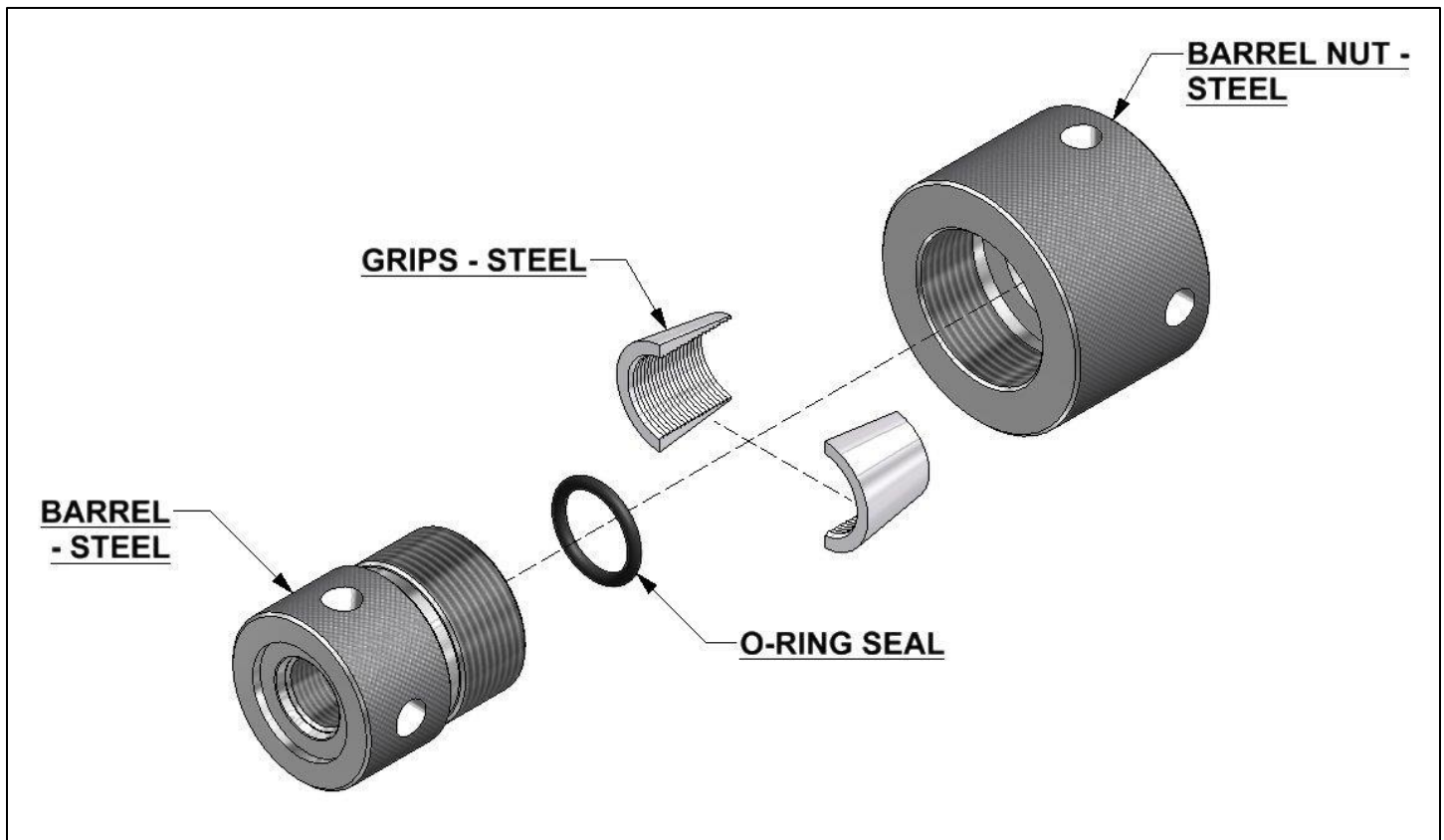


SIZES: 1/4" – 12"

THAXTON

A DIVISION OF HY-TECH MACHINE, INC.

TYPE “E” EXTERNAL CLOSURE



Instant, external positive sealing of pipe and tube . . . Just slide on and tighten.

- **HIGH SAFETY FACTOR** – As test pressures increase, the clamp forms a tighter seal.
- **GREAT RELIABILITY** – An industry-proven performer.
- **WIDE RANGE OF SIZES** in tubing and pipe up to 12” diameter.

THAXTON/EXTERNAL closures are engineered to quickly seal a plain-end pipe or tube, and eliminate welding on a cap for hydrostatic testing or flushing.

These industry proven closures are available in sizes from 1/4” to 12” and are manufactured from alloy steel, stainless steel, or aluminum with alloy steel grips.

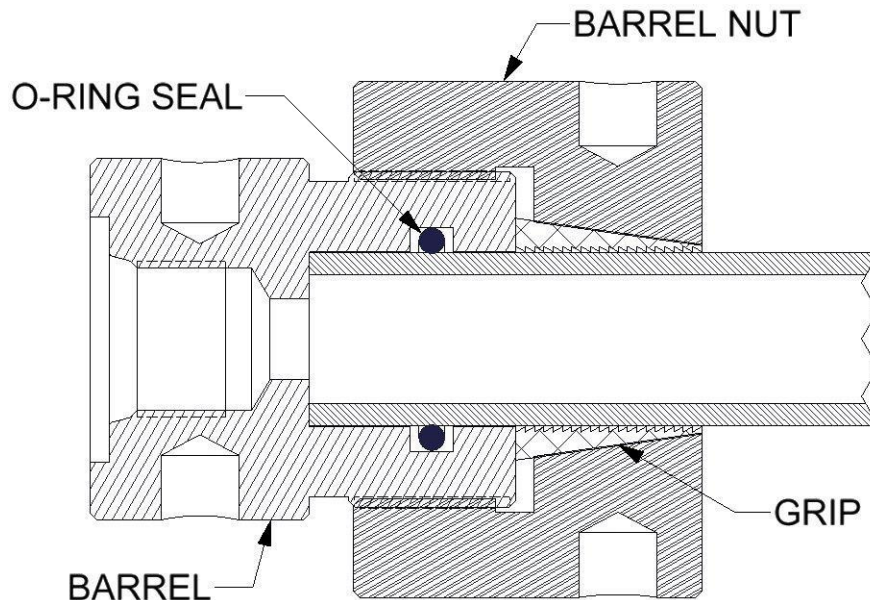
A perfect, leak free seal can be achieved every time, at pressures shown in the tabulation. Higher pressures, special closures, and safety gags can be engineered per customer requirements.

Thaxton High Pressure External Closures are factory tested up to 10,000 PSI, depending on size. Thaxton External Closures are held in place by steel grips holding against the outside wall of the pipe when the barrel nut is tightened. New o-ring can be purchased directly from the factory. This prolongs the useful life of a Thaxton External Closure almost indefinitely. Visit our website at www.thaxtonplugs.com or call toll free (1-800-331-3827) for product and ordering information.

THAXTON
A DIVISION OF HY-TECH MACHINE, INC.

THAXTON TYPE “E” EXTERNAL CLOSURE

INSTALLATION INSTRUCTIONS



A SPECIAL WORD OF CAUTION:

THAXTON, DIVISION OF HY-TECH MACHINE, INC. ENGINEERS AND MANUFACTURES A SUPERIOR HIGH PRESSURE TEST CLOSURE. HOWEVER, PRESSURE TESTING CAN BE AN EXTREMELY HAZARDOUS OPERATION AND SAFETY PRECAUTIONS SHOULD BE STRICTLY ADHERED TO. ALL CONNECTIONS, VALVES, FLANGES AND OTHER FITTINGS SHOULD BE CHECKED FOR SUITABILITY TO TEST PRESSURE. IF AIR OR COMPRESSED GAS IS USED AS A TEST MEDIUM, A SAFETY GAG AND BARRIER SHOULD BE INSTALLED TO PREVENT ACCIDENTAL DISCHARGE OF CLOSURE. **-MOST IMPORTANTLY- NEVER STAND IN FRONT OF ANY TEST PLUG OR OTHER ENCLOSURE WHILE TEST IS IN PROGRESS. IF CLOSURE DISCHARGES DURING A TEST, SERIOUS INJURY OR DEATH COULD OCCUR.**

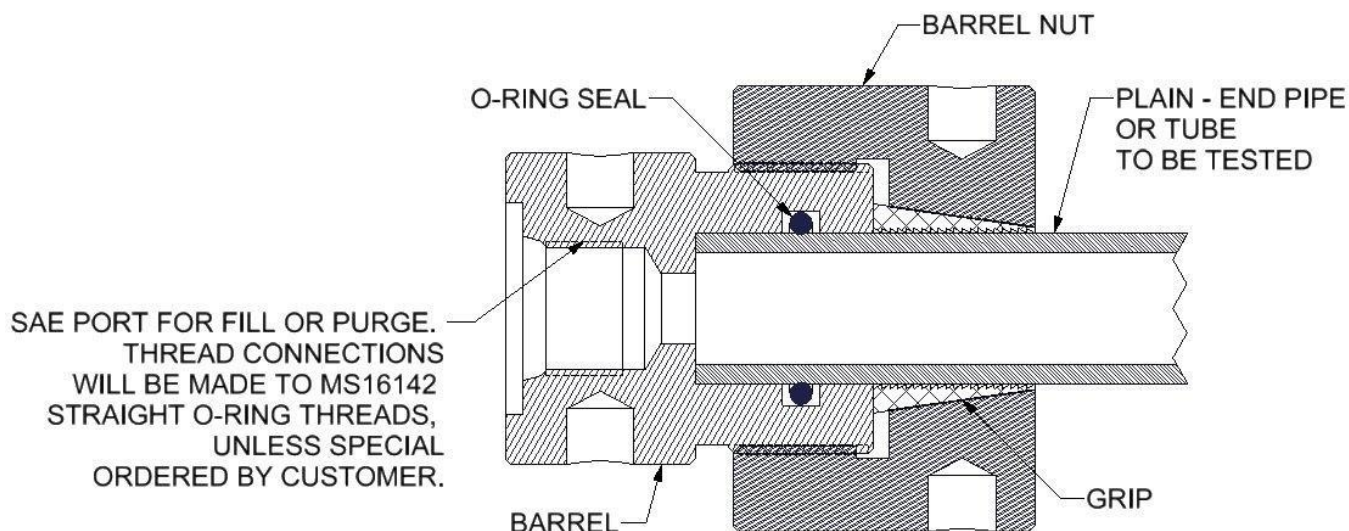
INSTALLATION:

- 1) REMOVE ANY ACCUMULATED DIRT, RUST PARTICLE, SCALE, ETC. FROM OUTSIDE OF PIPE END. IF POSSIBLE, LIGHTLY CHAMFER END OF PIPE. THE GRIPS AND O-RING MUST CONTACT CLEAN SOLID BASE MATERIAL FOR PROPER GRIP AND FLUID SEAL.
- 2) DISASSEMBLE THE NUT AND BARREL. APPLY ANTI SEIZE COMPOUND TO THE BARREL THREADS.
- 3) APPLY LIGHT OIL TO O-RING SEAL. AVOID GETTING OIL ON GRIP AREA.
- 4) INSTALL CLOSURE ASSEMBLY ONTO END OF PIPE. MAKE CERTAIN THAT BARREL IS SEATED SOLIDLY AGAINST THE END OF THE PIPE.
- 5) TURNING THE NUT, TIGHTEN TO A FIRM TIGHT CONDITION.
- 6) FILL PIPE WITH WATER AND VENT ANY REMAINING AIR. THIS CAN BE ACCOMPLISHED BY ELEVATING THE VENT END SLIGHTLY. WATER SHOULD BE RUN IN A STEADY STREAM WITHOUT BUBBLING. **ALL AIR MUST BE VENTED BEFORE PRESSURIZATION!**
- 7) CLOSE ALL VALVES, PORTS, VENTS, ETC.
- 8) BEGIN TESTING BY SLOWLY INCREASING PRESSURE INTO PIPE.

REMOVAL:

- 1) SHUT OFF THE PRESSURE SOURCE.
- 2) **SLOWLY** OPEN VALVE TO RELEASE STORED PRESSURE. RAPID RELEASE OF PRESSURE COULD CAUSE CLOSURE TO ACCIDENTLY DISCHARGE.
- 3) COMPLETELY DRAIN THE PIPE ASSEMBLY.
- 4) LOOSEN NUT THREE OR FOUR TURNS.
- 5) USING A RUBBER Mallet, TAP THE CLOSURE FORWARD. THIS WILL BREAK THE SEAL AND RELEASE THE GRIPS.
- 6) SLIDE THE CLOSURE OFF PIPE. NUT MAY NEED FURTHER LOOSENING.
- 7) DRY AND CLEAN EXTERNAL CLOSURE BEFORE STORAGE.

TYPE "E" EXTERNAL CLOSURE CHART



MODEL #	PIPE SIZE	MODEL #	TUBING O.D. SIZE
DCN-1/8-10K.....	1/8"	DCT-1/2-10K.....	1/2"
DCN-1/4-10K.....	1/4"	DCT-5/8-10K.....	5/8"
DCN-3/8-10K.....	3/8"	DCT-3/4-10K.....	3/4"
DCN-1/2-10K.....	1/2"	DCT-7/8-10K.....	7/8"
DCN-3/4-10K.....	3/4"	DCT-1-10K.....	1"
DCN-1-10K.....	1"	DCT-1-1/4-10K.....	1-1/4"
DCN-1-1/4-10K.....	1-1/4"	DCT-1-1/2-10K.....	1-1/2"
DCN-1-1/2-10K.....	1-1/2"	DCT-1-3/4-10K.....	1-3/4"
DCN-2-10K.....	2"	DCT-2-10K.....	2"
DCN-2-1/2-5K.....	2-1/2"	DCT-2-1/2-5K.....	2-1/2"
DCN-3-5K.....	3"	DCT-3-5K.....	3"
DCN-3-1/2-5K.....	3-1/2"	DCT-3-1/2-5K.....	3-1/2"
DCN-4-5K.....	4"	DCT-4-5K.....	4"
DCN-5-5K.....	5"	DCT-4-1/2-5K.....	4-1/2"
DCN-6-3K.....	6"	DCT-5-5K.....	5"
DCN-8-3K.....	8"	DCT-6-3K.....	6"
DCN-10-2K.....	10"	DCT-8-3K.....	8"
DCN-12-2K.....	12"	DCT-10-2K.....	10"
		DCT-12-2K.....	12"
Note: 10K = 10,000 PSI, 5K = 5,000 PSI, 3K = 3,000 PSI, 2K = 2,000 PSI (Maximum Test Pressure)			
Available in Alloy Steel, Stainless Steel or Aluminum.			



A DIVISION OF HY-TECH MACHINE, INC.

25 Leonberg Road
 Cranberry Township, PA 16066
 1-800-331-3827
 FAX: (724) 776-6811
 www.thaxtonplugs.com
 Email: info@hy-techinc.com