



A712 SERIES

RIGHT ANGLE GRINDER



AIR TOOL SERVICE COMPANY

A DIVISION OF HY-TECH MACHINE

25 LEONBERG ROAD

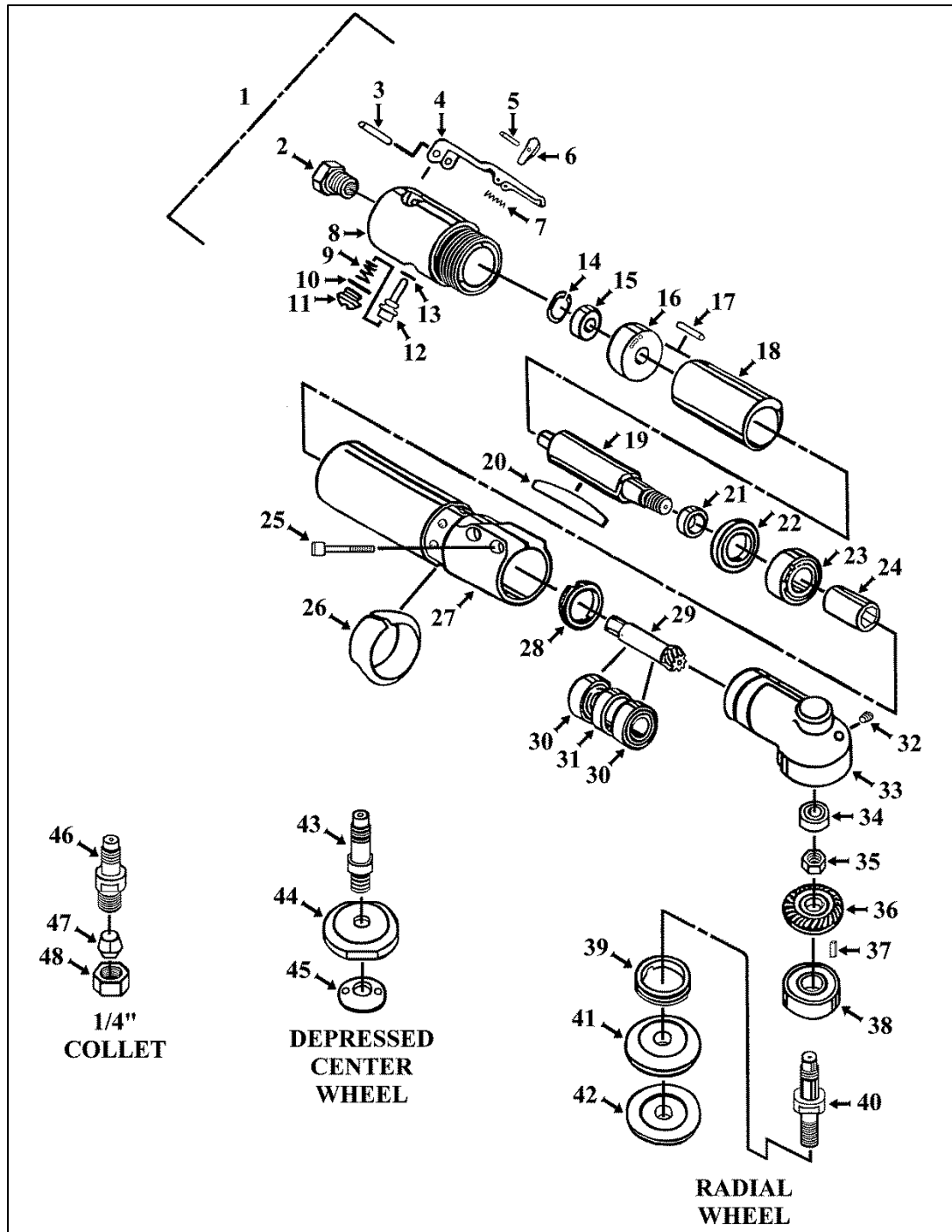
CRANBERRY TOWNSHIP, PA 16066

1-800-321-3554

www.onlineatp.com

Email: info@hy-techinc.com

ATSCO A712 SERIES ANGLE GRINDER



AIR TOOL SERVICE COMPANY

A DIVISION OF HY-TECH MACHINE

25 LEONBERG ROAD

CRANBERRY TOWNSHIP, PA 16066

1-800-321-3554

www.onlineatp.com

Email: info@hy-techinc.com

ATSCO A712 SERIES GRINDER

A712 SERIES PARTS			OPTIONS		
ITEM #	ATSCO #	DESCRIPTION	ITEM #	ATSCO #	DESCRIPTION
1	87A-G25S	BACKHEAD ASSY (INCL. #2, 3, 4, 5, 6, 7, 8, 9, 10, 11, 12, 13)	WITH CONE WHEEL SPACER		
2	63-T33	BUSHING	NI	201-G25RA-1	SPINDLE
3	2187-0875	THROTTLE LEVER PIN	CONE WHEEL (NOT ILLUSTRATED)		
4	31A-640S	THROTTLE LEVER ASSY (INCL. #4A, 5, 6, 7)	NI	230-WS4	SPACER
4A	31-640S	THROTTLE LEVER	NI	269-25RA	WRENCH FOR ITEM #40
5	2093-0750	TOGGLE PIN	RADIAL WHEEL WITH 4" GUARD		
6	82A-640S	TOGGLE LEVER	40	201-G25RA	SPINDLE
7	97-640S	SPRING	41	209-TS1	INNER WHEEL WASHER
8	87-G25	BACKHEAD	42	210-TS2	OUTER WHEEL WASHER
9	26-640	THROTTLE VALVE SPRING	RADIAL (NOT ILLUSTRATED)		
10	93-13	THROTTLE VALVE SEAL	NI	235-25RA-4	4" WHEEL GUARD
11	30-650	THROTTLE CAP	NI	269-25RA	WRENCH FOR ITEM #40
12	25-650	THROTTLE VALVE (INCL. #13)	NI	269-G25A	WRENCH FOR ITEM #42
13	93-9	O-RING	SANDER		
14	5000-75	RETAINING RING	NI	201-G25RA-1	SPINDLE
15	222-99	REAR MOTOR BALL BEARING	SANDER (NOT ILLUSTRATED)		
16	203-G25B	REAR END PLATE	NI	210-7025	NUT
17	2093-0312	ROLL PIN	NI	254-11G	5/8-11 ADAPTOR
18	90-G25RA	CYLINDER (INCL. #17)	NI	269-102	SPANNER WRENCH
19	206-G25-3/8	ROTOR	DEPRESSED CENTER WHEEL WITH 4" OR 5" GUARD		
20	200-G25	ROTOR BLADE (QTY: 4)	43	201-G25RAD	SPINDLE TYPE 27, 28 WHEELS
21	206A-G25	SPACER	44	209-31A	INNER WHEEL COLLAR
22	202-G25	FRONT END PLATE	45	210-1	WHEEL NUT
23	222-105	FRONT ROTOR SHEILDED BEARING	DEPRESSED CENTER (NOT ILLUSTRATED)		
24	254-G25RA	DRIVE ADAPTER	NI	235-31A-4N	4" WHEEL GUARD
25	22-804	8-32 CLAMP SCREW (QTY: 2)	NI	235-G25-5	5" WHEEL GUARD
26	36-G25S	EXHAUST DEFLECTOR	NI	269-G20B	ALLEN WRENCH FOR ITEM #43
27	90A-G25RA	MOTOR HOUSING	NI	269-G25	WRENCH
28	107-G25RA	BEARING NUT	NI	269-G500	WRENCH FOR ITEM #44
29	244S-2512	PINION GEAR (INCL. #36)	NI	269-31AR	WRENCH FOR ITEM #45
30	222-21	PINION SHAFT BEARING (QTY: 2)	WITH 1/4" COLLET		
31	230S-2512	BEARING SPACER (SOLD IN PAIR)	46	201-G25E	SPINDLE
32	34-31A	GREASE FITTING	47	213A-602	ERICKSON COLLET
33	100-G25RA	ANGLE HOUSING (INCL. #32)	48	254-602-1C	COLLET NUT
34	222-55	REAR SPINDLE BALL BEARING	1/4" COLLET (NOT ILLUSTRATED)		
35	207-31A	LOCK NUT	NI	269-G25A	WRENCH FOR ITEM #46
36	244S-2512	BULL GEAR (INCL. #29)	NI	269-31C	WRENCH
37	8-2512A	GEAR KEY	ORDERING INSTRUCTIONS		
38	222-2	FRONT SPINDLE SHEILDED BEARING	Always include tool model, description, and quantity required when ordering.		
39	207-G25RA	SPINDLE BEARING NUT			
NOT ILLUSTRATED (IN BUILD)					
NI	31-640	THROTTLE LEVER (OPT.)			
NI	36D-G25S	MUFFLER (#26)			
NI	45A-1	SCREEN (#2)			
NI	45B-1	RING (#2)			
NI	74-G25RA	RETAINING RING (QTY: 2)			
NI	85-2500S	ERGO GRIP (OPT.)			
NI	93-28	O-RING (#26)			



ATSCO A712 SERIES GRINDER

SERVICE INSTRUCTIONS

Before the tool is put into service, check for any possible shipping damage and free spindle rotation. Select the proper wheel for the type spindle installed in the tool. Be sure that the "DO NOT EXCEED" speed of the wheel is at least as high as the rated tool speed. Do not operate the tool without the required wheel guard and adequate eye and ear protection.

Pour about one tablespoon of "Blue Magic" in the tool inlet. Provide a supply of clean dry compressed air @ 90 PSI thru a hose and coupler with a minimum inside diameter of 3/8". Use a larger hose if the length exceeds 8 feet. Line filters and oilers will add many hours to the life of the tool and we highly recommend their use.

LUBRICATION

ATSCO grinders should be lubricated with "Blue Magic" Lubricant. It not only lubricates but also helps keep the tool clean and free of sludge and buildup, which can cause any air tool to lose its performance and efficiency. Airline filters and automatic line lubricators properly installed on your airline will improve productivity and extend tool life.

BEARINGS

All ATSCO grinders are equipped with the best bearings obtainable. They should be checked regularly for signs of wear. If wear in the bearings is indicated, they should be replaced. Bearings are a comparatively low cost item, and the replacement before failure may prevent damage to more expensive parts.

ROTOR BLADES

The rotor blades are subject to wear. Replacement should be made when they show approximately 10% wear from their original size. It is suggested that a spare set of blades be kept on hand at all times. Proper lubrication will greatly prolong the life of rotor blades. Portable air tools are mechanical devices which are often subjected to severe usage and abuse. Many users have found it advantageous to maintain a minimum stock of normal wearing parts so that minor repairs can be made in their own plant. Your ATSCO representative will welcome the opportunity to instruct your repairman and to help prepare a minimum list of parts.

AIR TOOL SERVICE COMPANY

A DIVISION OF HY-TECH MACHINE

25 LEONBERG ROAD

CRANBERRY TOWNSHIP, PA 16066

1-800-321-3554

www.onlineatp.com

Email: info@hy-techinc.com